

Easy to use Measurement and Evaluation Software for Remote Configuration of Fixed Digital IMPAC Pyrometers

## InfraWin 5

- Remotely configure pyrometer settings via computer
- Connect up to two pyrometers at the same time.
- Display temperature data as color bars and online graphics
- Capture downstream evaluations as tables, graphics or text files
- Calculate the spot size for different measuring distances
- Features UPP standard (Universal Pyrometer Protocol)



### Overview

InfraWin 5 is the standard software from LumaSense for adjusting and controlling stationary, digital IMPAC brand pyrometers.

This software allows the user to remotely adjust and control one or two pyrometers from a single computer. InfraWin makes it possible for the user to quickly and easily change pyrometer settings. The software also allows the user to simultaneously monitor and control temperatures.

After connecting the pyrometer to a PC, there are some parameters available in addition to the parameters directly adjustable. For example, the software allows

the user to set a sub range or allocate an address for bus control via RS485 interface.

A comprehensive online help function provides detailed information about all software functions available and guarantees an easy and convenient use.

Software GUI allows users to easily switch between six different languages: English, German, French, Spanish, Portuguese, and Chinese.

InfraWin is freeware and can be downloaded from the LumaSense website at: [www.LumaSenseinc.com](http://www.LumaSenseinc.com).

### What's New in InfraWin 5

- Improved user interface, that enables the display of several functions at the same time.
- Optional USB interface: I/O module
- Service protocol
- Integrated installation of USB converters
- Previously measured parts of the curve can be viewed, while the measurement is still running in the background

## Software Features

### Pyrometer Settings

An IMPAC digital pyrometer connected to a PC will be automatically detected by the software. All available parameters are adjustable, including emissivity, response time, maximum value storage, output signal and sub range.

Further special functions are adjustable for example controllers or TV parameters on instruments available with these

functions. Changes are transmitted directly to the pyrometer.

### Measurement with Color Bar

In this window a temperature value for the upper or lower limit can be adjusted numerically or with the mouse.

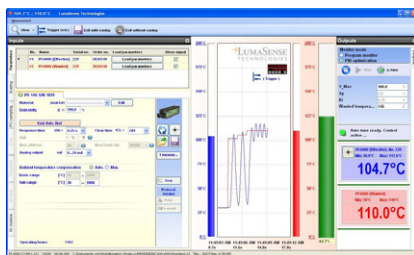
The acquired minimum and maximum value is indicated as well as the inner temperature of the pyrometer. The emissivity is

changeable during the measurement at any time.

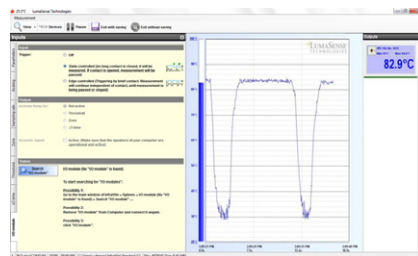
### Infrared Calculator

After input of the aperture and the focused spot size per datasheet, the calculation of spot sizes at non-focused distances is possible.

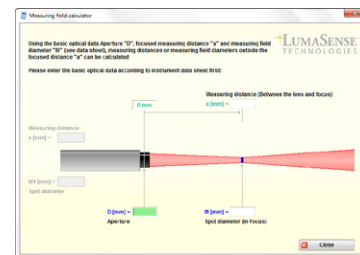
## Examples



**Measurement with Internal Temperature of radiation temperature and internal instrument temperature.** Parameters can be changed during the measurement.



**I/O Module** allows users to trigger measurement externally and gives a potential free output contact.



**Measuring Field Calculator** allows the user to enter the aperture and the focused spot size and calculate spot sizes in non-focused measuring distances of the fixed optics.



**Output Graphics** allow users to review the temperature change over time within the specified temperature range. Displays the recorded time and temperature

## System Requirements

InfraWin 5 is designed to operate on a Windows™ based computer with the following (minimum) components.

- 2 GHz or faster processor
- 1 GB RAM (2 GB or higher recommended)
- 500 MB Free Hard Disk Space
- Monitor width: min 1280 pixels
- Windows XP, Vista (32 or 64 bit), Windows 7 (32 or 64 bit)

## LumaSense Technologies

Americas and Australia  
Sales & Service  
Santa Clara, CA  
Ph: +1 800 631 0176  
Fax: +1 408 727 1677

Europe, Middle East, Africa  
Sales & Service  
Frankfurt, Germany  
Ph: +49 69 97373 0  
Fax: +49 69 97373 167

India  
Sales & Support Center  
Mumbai, India  
Ph: +91 22 67419203  
Fax: +91 22 67419201

China  
Sales & Support Center  
Shanghai, China  
Ph: +86 133 1182 7766  
Fax: +86 21 5877 2383

[info@lumasenseinc.com](mailto:info@lumasenseinc.com)

LumaSense Technologies, Inc., reserves the right to change the information in this publication at any time.

## Temperature and Gas Sensing Solutions

[www.lumasenseinc.com](http://www.lumasenseinc.com)

©2012 LumaSense Technologies. All rights reserved.  
InfraWin5 Datasheet Rev. 06/01/12